



Techbau

Engineering & Construction



Our Values. Our Mission.

Techbau is the exclusive partner for civil engineering and infrastructure projects, delivering excellence in quality, sustainability, and safety.

Contact Us

Explore Our Projects



WHO WE ARE

Techbau positions itself as a single point of contact and General Contractor, developing projects across various sectors of civil engineering and infrastructure.

Techbau operates in the residential, commercial, industrial, logistics, data center, and renewable energy sectors, adhering to the highest standards of sustainability, quality, and safety. Founded in 2010, Techbau has evolved over the years, expanding its expertise and continuously welcoming an increasing number of highly qualified professionals to its team.

➤ [View more](#)

SHAREHOLDERS

AMH is a holding company owned by the founder of Techbau.

A shared purpose and a clear objective: to provide full support to the client throughout every stage of designing, planning, constructing, and successfully delivering the building, through comprehensive management of all aspects of planning, administration, construction, and permitting.

BGO Europe IV TB Lux S.à r.l., an entity controlled by BGO.

By combining a strong on-the-ground presence in global markets with sophisticated analysis, in-depth research, and industry-leading commitments to sustainability, our buildings—and the communities they nurture—are set to become the stages for the next major chapters of our shared story.

Operating in 27 cities worldwide with a team of over 1,400 employees, BGO is ready for what lies ahead.

AMH

Techbau S.p.A

 BGO

SERVICES

01

General Contractor

Techbau manages the planning, coordination, and execution of complex construction and engineering projects with full responsibility, offering tailored solutions for the industrial, commercial, infrastructure, and technology sectors.

Thanks to a highly qualified multidisciplinary team, the company provides integrated services across all project phases, from feasibility studies to construction and commissioning, with precision and innovation.

➤ [View more](#)

02

Development

Techbau supports clients from the earliest stages of real estate development, from site identification and due diligence—based on a proprietary database—to acquisition management, negotiation, and financial-economic analysis. Through integrated collaboration among technical, legal, financial, and planning teams, Techbau ensures effective coordination during the design, permitting, and authorization phases, guaranteeing regulatory compliance and strategic robustness.

➤ [View more](#)

03

Facility Management

Techbau supports clients throughout the entire building lifecycle, providing advanced monitoring and management solutions to preserve performance and long-term value.

Through BIM and a specialized team in operations, maintenance, and energy optimization, Techbau ensures an integrated approach from commissioning to renewal, maximizing operational efficiency as well as economic, environmental, and functional value.

➤ [View more](#)

04

Asset Management

Techbau's asset management strategically oversees and optimizes company assets to ensure maximum efficiency, sustainability, and long-term value.

By leveraging advanced data analytics, predictive maintenance, and state-of-the-art tracking systems, it enhances operational performance, minimizes risks, and maximizes returns, supporting sustainable growth and strengthening the company's competitive advantage in the market.

➤ [View more](#)

BIM CERTIFICATION

Techbau provides a highly specialized project management team.

We place the client at the center of every project to deliver buildings that meet and exceed expectations, driven by a constant focus on innovation, advanced technologies, and the highest standards in materials and construction methodologies.

A fundamental pillar of our approach is the adoption of integrated BIM (Building Information Modeling), which enables precise coordination, improved risk management, and smoother decision-making throughout all phases of development.

Techbau is certified under PDR 74:2019 by Bureau Veritas, ensuring full compliance with quality standards and enhancing the efficiency of our 360° BIM-based project management. This approach allows us to reduce waste, optimize resources, and guarantee complete transparency across the entire construction process.

ISO 9001

**BUREAU VERITAS
Certification**



ESG

BREEAM®

BREEAM
CERTIFICATION



WELL
CERTIFICATION



USGBC
MEMBER

LEED
CERTIFICATION



THINK GREEN
CERTIFICATION



SOA
CERTIFICATION



ISO
CERTIFICATION

Techbau adheres to the main international environmental certification systems, such as USGBC LEED and BREEAM, providing within its organization highly qualified professionals, including LEED APs, BREEAM Assessors, Energy Managers, and SQE Engineers specialized in renewable energy and environmental management.

Our focus goes beyond energy savings to include water conservation, emission reduction, and careful attention to each site, its potential, and unique characteristics. Techbau is also fully committed to issues such as minimizing land consumption, improving occupant comfort, and promoting recycling and recyclability in the selection of construction materials.

To achieve these goals, Techbau employs tools such as Life Cycle Assessment, carbon footprint analysis, and landscaping interventions aimed at environmental compensation and site redevelopment.

CARBON NEUTRALITY

Techbau has successfully implemented the ILFI certification process, the world's first Zero Carbon certified standard.

The priorities of our projects are energy efficiency, the use of renewable resources, and the reduction of carbon emissions. While our projects have always adhered to the main international environmental protocols, we continue to look to the future, aligning with the directives of the Paris Agreement on Climate Change of November 4, 2016, and the EU Environmental Taxonomy introduced by REGULATION (EU) 2020/852.

As set out in the agreement, the EU has presented its long-term strategy for emissions reduction and updated climate plans by the end of 2020, committing to reduce emissions by at least 55% by 2030 compared to 1990 levels. The EU aims to achieve climate neutrality by 2050.



HSE

The protection of safety, the environment, and occupational health is a core part of Techbau's operations. The company recognizes the critical importance of environmental and safety issues, not only within the construction sector but also for the wider community. Techbau is fully committed to complying with all applicable environmental and safety regulations, striving to continuously enhance its performance through targeted programs, regular monitoring, strategic resource allocation, and ongoing personnel training.

Furthermore, the company actively monitors and improves its safety and environmental performance through the implementation of a comprehensive management system (SEMS).

This system clearly defines responsibilities, procedures, processes, and resources within the organization, ensuring the effective execution of its corporate prevention policy and strict compliance with current health, safety, and environmental regulations. Through this integrated approach, Techbau promotes a culture of continuous improvement, accountability, and sustainability across all its operations.

»» The management system is defined, documented, implemented, and continuously maintained to ensure its effectiveness and suitability in achieving the company's safety and environmental objectives, as well as to guarantee compliance with ISO 45001:2018 and ISO 14001:2015 standards.



SAFETYTECH

Techbau's **construction site management system** is based on a dedicated organizational structure, rigorous HSE standards, and continuous performance monitoring, organized into the following six key areas:



Project Governance

A dedicated task force led by the Project Manager, including the HSE Supervisor, Quality Manager, MEP Project Manager, and Site Manager, to ensure operational control, safety, and regulatory compliance.



Interference Management

Simultaneous activities are managed through coordination meetings, work permits, toolbox talks, and dedicated training, in accordance with the Safety and Operational Plan (POS), which is continuously updated.



Standard Cantiere

Construction Site Standards – Sites adopt high HSE standards, including access control, area segregation, waste management, adequate facilities, and safe pathways, ensuring order and risk prevention.



Regulatory Compliance

The Protected Sites platform monitors documentation, training, and site access. Internal and third-party audits ensure compliance with Legislative Decree 81/2008 and full operational transparency.



HSE Monitoring

HSE performance is carefully measured through monthly KPIs shared with management. Lessons Learned sessions actively support the continuous improvement of the system.



Performance Indicators

Workforce, hours, near misses, accidents, environmental events, and transport are monitored. Fatality, Frequency, Severity, Risk, and Surveillance indices provide a quantitative assessment of HSE performance.



QualiTech

Techbau firmly believes that a robust Quality System is the foundation for enhancing the qualitative results of its deliverables.

Quality principles are in our **DNA**, because we are passionate about:

-
- 01 Listening to the needs of our clients and all stakeholders

 - 02 Operating through lean and agile processes

 - 03 Measuring our performance to continuously excel and generate value

The Quality System is at the heart of our continuous improvement agenda, enabling us to innovate our know-how, effectively reduce operational risks and costs, and maximize the return on investment for our clients.

FINANCIAL STATEMENT

2022-2023

€ Total revenues

€ 385.1 MM

% EBITDA

€ 44.8 MM

2023-2024

€ Total revenues

€ 525.4 MM

% EBITDA

€ 52.8 MM

2024-2025

€ Total revenues

€ 713.1 MM

% EBITDA

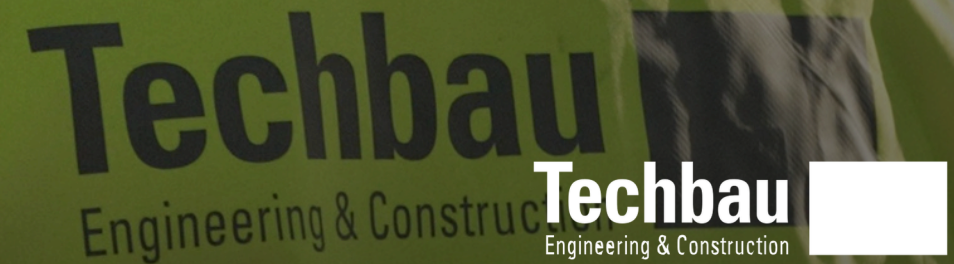
€ 102.680 MM

Techprojects

BUILDING YOUR FUTURE

Our Accomplishments

[Explore Our Projects](#)



LOGISTICS



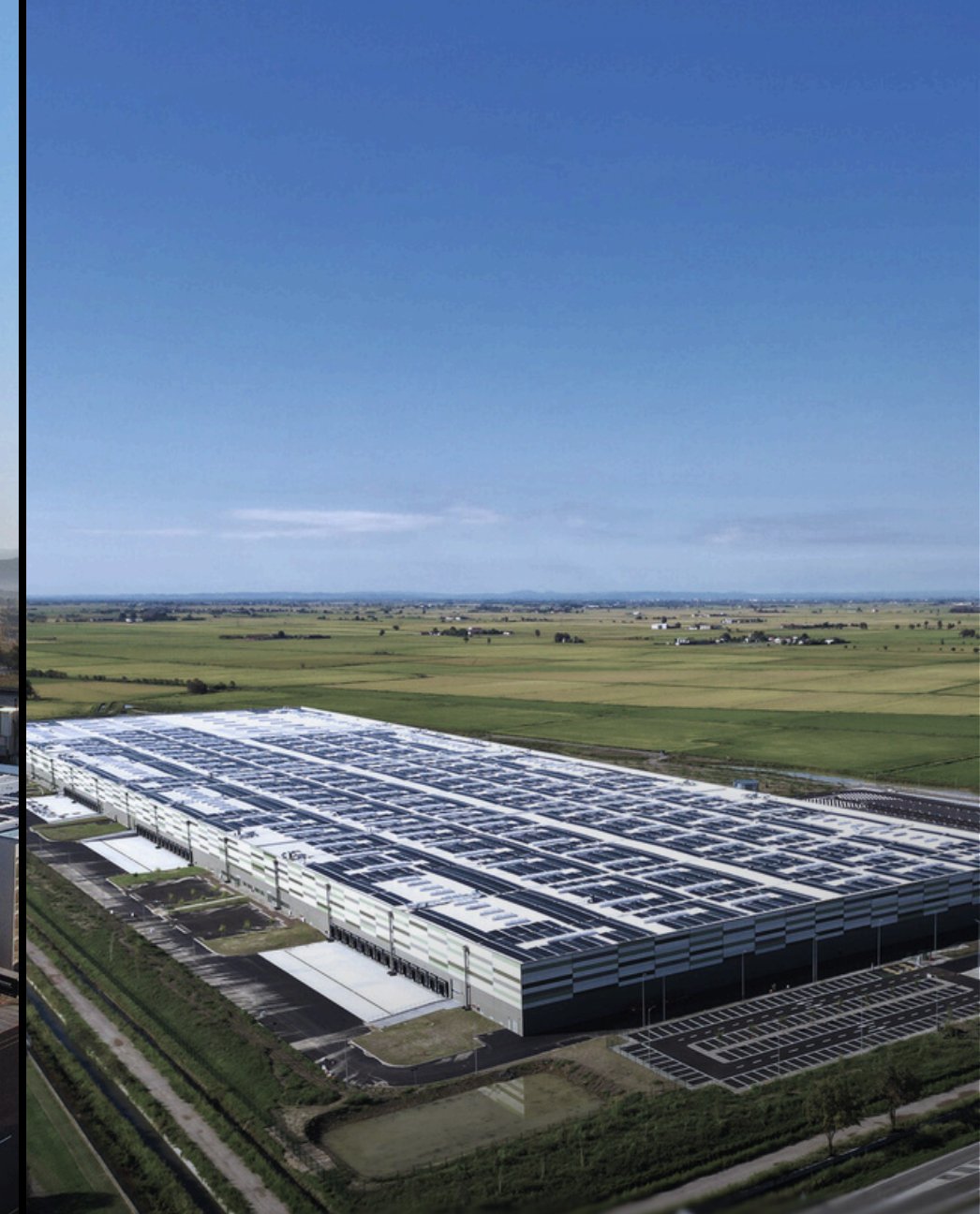
01.
Kering Logistics Hub | Trecate

➤ [View more](#)



02.
Amazon Logistics Hub | Jesi

➤ [View more](#)



03.
S. Pietro Mosezzo Logistics Hub | Novara

➤ [View more](#)

STUDENT HOUSING



01.
Campus X | Bologna

[View more](#)



02.
Campus X Novate | Milan

[View more](#)



03.
Campus San Pietro | Rome

[View more](#)

DATA CENTER



01.
ML7 Equinix | Settimo Milanese

[➤ View more](#)



02.
Vantage | Settimo Milanese

[➤ View more](#)



03.
Digital Realty | Roma

[➤ View more](#)



RENEWABLE ENERGY



01.

Passo corese | Rieti

> [View more](#)



02.

Retina | Lazio

> [View more](#)



03.

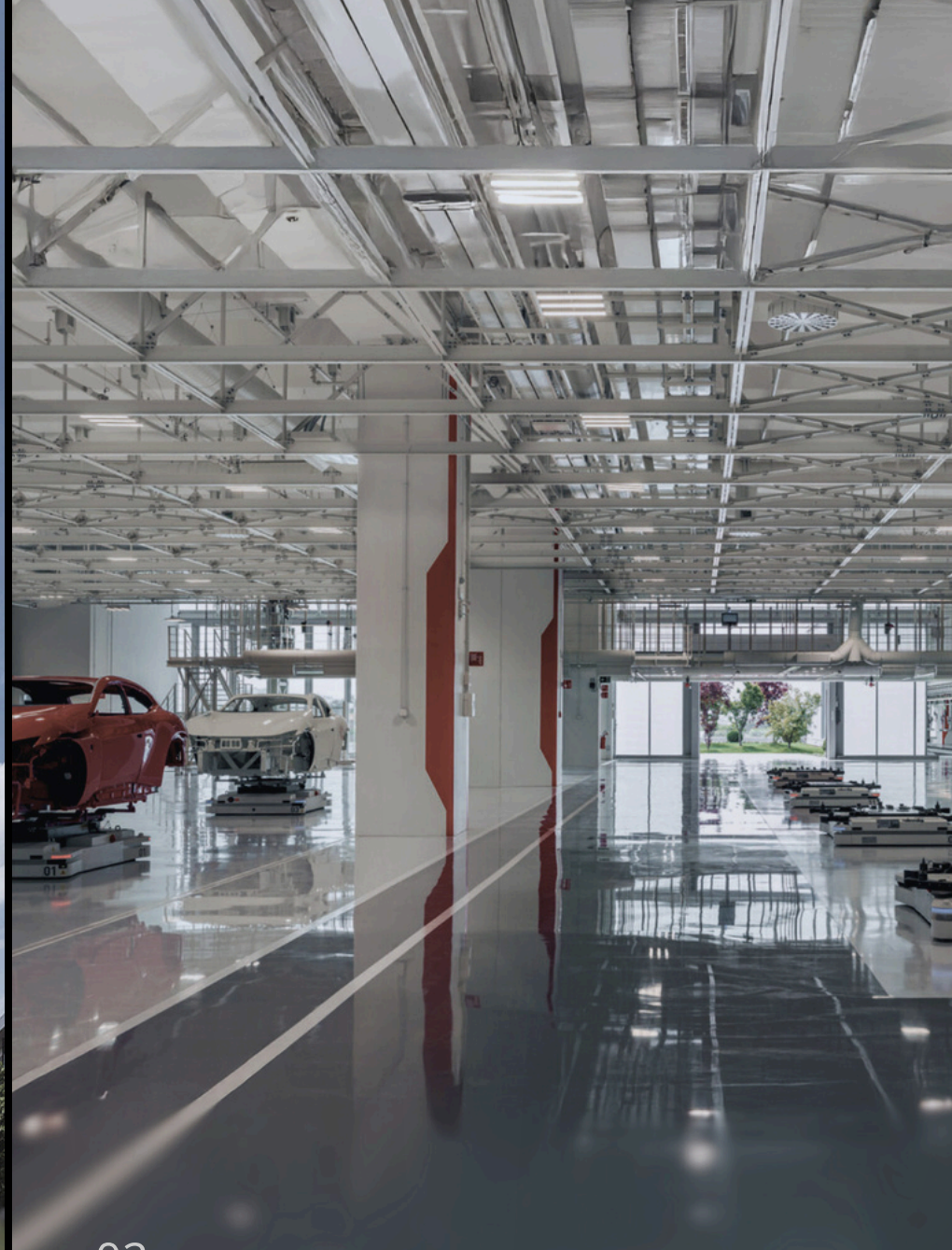
TBGE | Masserano

INDUSTRIAL



01.
E-building | Maranello

[View more](#)



02.
E-building | Maranello

[View more](#)



03.
LNG Terminal | Dunkerque

[View more](#)

RESIDENTIAL



01.
Bombay New Living | Rome

> [View more](#)



02.
Via della Vignaccia | Rome

> [View more](#)



03.
Palace Naviglio | Milan

> [View more](#)

CLIENTS



Abitare In®



Techbau S.p.A.

Head office

Via del Lago, 57
28053 Castelletto Sopra Ticino (NO) . Italy
Ph +39 0323 589500
info@techbau.it
www.techbau.it

Bologna Office

Via Piero Gobetti, 52/3
40100 Bologna (BO) . Italy

Rome Office

Via Emanuele Gianturco, 6
00196 Roma (RM) . Italy
Ph +39 06 92044282

Techbau S.p.A.

Registered office

Piazza Giovine Italia 3
20123 Milan / Italy
Cap. Soc. € 10.050.000,00 int. versato
Reg. Imprese Milano, C.F., V.A.T. IT
06336690968
REA MI-1922561